

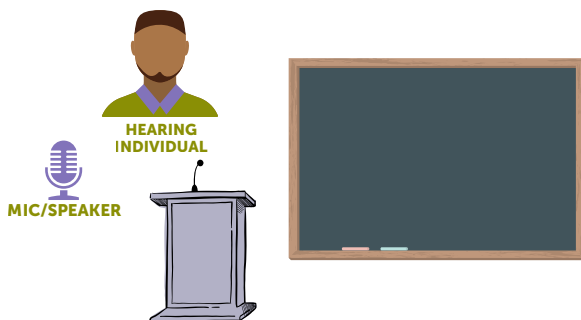
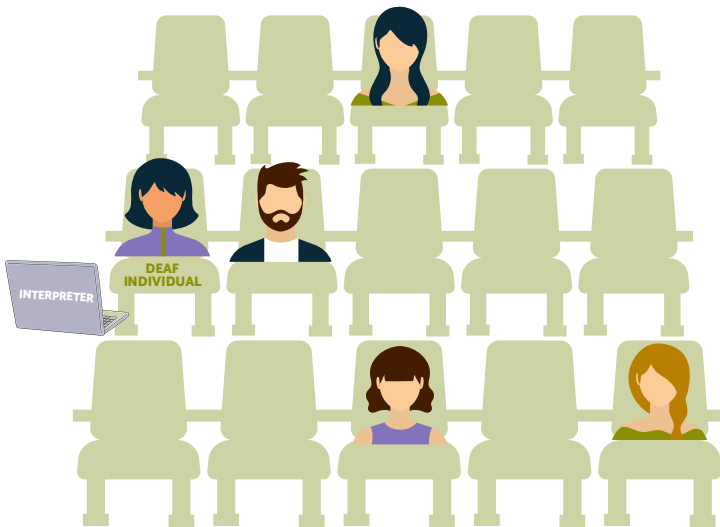
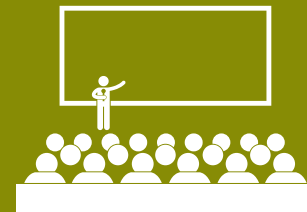


DEAF
SERVICES
UNLIMITED

VRI

Configuration

LECTURE HALL/ CONFERENCE



QUESTIONS TO CONSIDER



Is the room noise suitable to hear the interpreter voicing through the device?



Is the lighting suitable for the Deaf individual to see the interpreter on screen?



Is the microphone located centrally to capture all spoken audio for signing?

*If the audience will be responding, be sure to have a mobile microphone available connected to the audio feed. Also, ensure the hearing individual presenting will be able hear the Interpreter through a speaker if the Deaf Individual responds.



Visit Our Website
www.deafservicesunlimited.com



Call Us
+800-930-2580



Follow Us
@DeafServicesUnlimited



DEAF
SERVICES
UNLIMITED

VRI

Configuration

MEETING/SMALL GROUP



QUESTIONS TO CONSIDER



Is the room noise suitable to hear the interpreter voicing through the device?



Is the lighting suitable for the Deaf individual to see the interpreter on screen?



Is the microphone located centrally to capture all spoken audio for signing?



Visit Our Website
www.deafservicesunlimited.com



Call Us
+800-930-2580



Follow Us
@DeafServicesUnlimited



DEAF
SERVICES
UNLIMITED

VRI

Configuration

DIVIDED LANDSCAPE



QUESTIONS TO CONSIDER



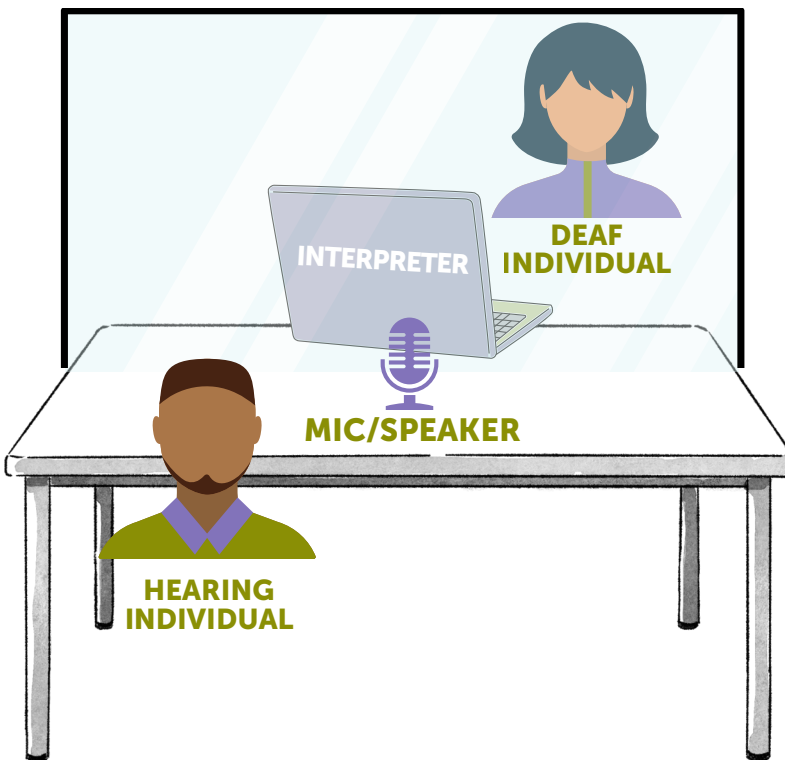
Is the room noise suitable to hear the Interpreter voicing through the device?



Is the lighting suitable for the Deaf Individual to see the Interpreter on screen?



Is the microphone located centrally to capture all spoken audio for signing?



Visit Our Website
www.deafservicesunlimited.com



Call Us
+800-930-2580



Follow Us
@DeafServicesUnlimited



DEAF
SERVICES
UNLIMITED

VRI

Configuration

COURTROOM



QUESTIONS TO CONSIDER



Is the room noise suitable to hear the Interpreter voicing through the device?



Is the lighting suitable for the Deaf Individual to see the Interpreter on screen?



Is the microphone located centrally to capture all spoken audio for signing?



Visit Our Website
www.deafservicesunlimited.com



Call Us
+800-930-2580



Follow Us
@DeafServicesUnlimited

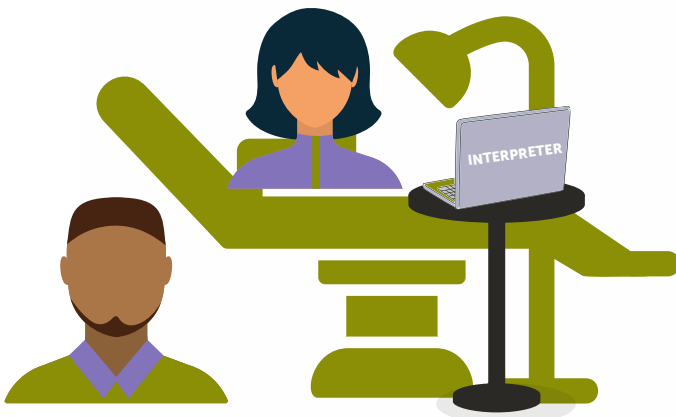


DEAF
SERVICES
UNLIMITED

VRI

Configuration

HEALTHCARE



**HEARING
INDIVIDUAL**

QUESTIONS TO CONSIDER



Is the room noise suitable to hear the Interpreter voicing through the device?



Is the lighting suitable for the Deaf Individual to see the Interpreter on screen?



Is the microphone located centrally to capture all spoken audio for signing?



Visit Our Website
www.deafservicesunlimited.com



Call Us
+800-930-2580



Follow Us
@DeafServicesUnlimited



DEAF
SERVICES
UNLIMITED

VRI

Configuration

COUNCIL/PANEL DISCUSSION



QUESTIONS TO CONSIDER



Is the room noise suitable to hear the interpreter voicing through the device?

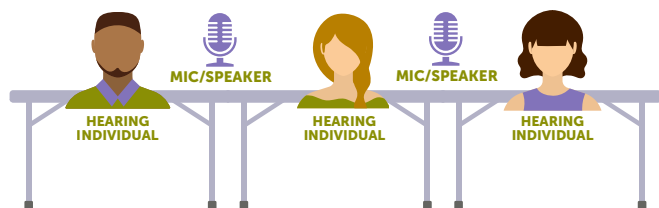
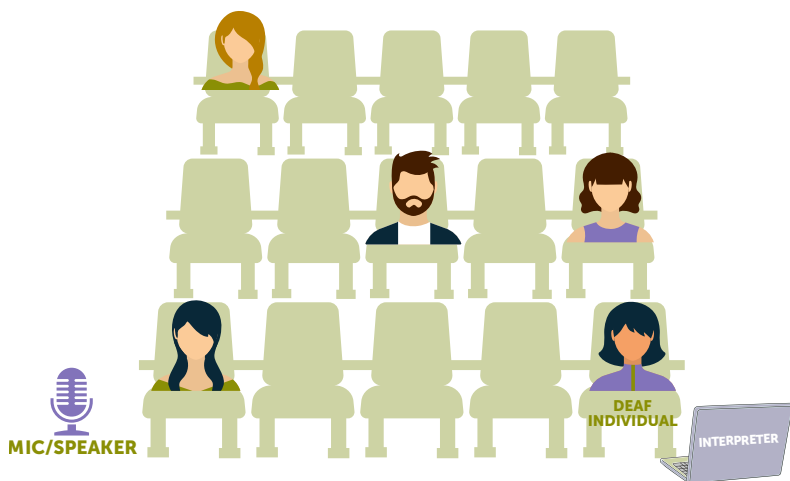


Is the lighting suitable for the Deaf individual to see the interpreter on screen?



Is the microphone located centrally to capture all spoken audio for signing?

*If the audience will be responding, be sure to have a mobile microphone available connected to the audio feed. Also, ensure hearing individual presenting will be able hear the interpreter through a speaker if the Deaf individual responds.



Visit Our Website
www.deafservicesunlimited.com



Call Us
+800-930-2580



Follow Us
@DeafServicesUnlimited